



Compact Control for Walk-behind and Ride-on Cleaning Machines

PGDT OFFICES

- PG Drives Technology Inc.
2532 East Cerritos Avenue
Anaheim
CA 92806-5627 USA
Tel: +1 714 712 7911
Fax: +1 714 978 9512
- PG Drives Technology Ltd.
10 Airspeed Road
Christchurch
Dorset BH23 4HD UK
Tel +44 (0)1425 271444
Fax +44 (0)1425 272655
- PG Drives Technology Asia (Taiwan)
Taiwan International Business Center
4F, 25, Sec. 1 Tunhua S. Rd.
Taipei, Taiwan ROC
Tel +886 (0)2 2579 1821
Fax +886 (0)2 2579 8381
- PG Drives Technology Asia (Hong Kong)
Unit 3, Cambridge House
Taikoo Place, 979 King's Road
Island East, Hong Kong
Tel: +852 2293 2621
Fax +852 2293 2678

PGDT REGIONAL PARTNERS

- China:
Hefei Qinli (Qinlong) Electronics Co., Ltd.
Tel: +86 551 3818462
- Korea:
Comesys Korea
Tel: +82 (0) 51 971 8846
- India:
Sirius Controls Pvt. Ltd.
Tel: +91 80 4110 7676
- Germany:
DMC - Digital Motor Control GmbH
Tel: +49 (0) 2366 10077-0
- France and Belgium:
Ruben Power
Tel: +32 (0)3 488 50 71
- Italy:
I.T.C. - Industrial Technology
Tel: +39 01122 69035
- Netherlands:
Q-tronic
Tel: +31 (0) 33 2535063
- Spain, Portugal and South America:
Sevtronic
Tel: +34 93 226 20 85
- Australia and New Zealand:
I.T.P.
Independence Technology Pty. Ltd.
Tel: +61 (0)3 9796 1522



www.pgdt.com



PG DRIVES TECHNOLOGY



SK79008/04/08



PG DRIVES TECHNOLOGY

- 24V or 36V system voltages
- 45A, 70A, 140A and 180A power ratings
- Advanced drive algorithm
- 3 programmable auxiliary outputs
- Belly-button function
- Battery lockout function
- Hours run timer function
- Powerful on-board diagnostics
- System log
- Environmentally sealed
- Low impedance inputs
- Self-protecting outputs

The i-Drive permanent magnet motor speed controller has been designed specifically for applications such as walk-behind floorcare machines and small materials handling devices. i-Drive provides a combination of features, protection, and cost-effectiveness unmatched by any other controller on the market today.

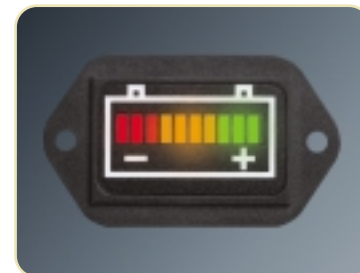
i-Drive is available with 45A, 70A, 140A and 180A power outputs for both 24V and 36V system voltages, and employs advanced control algorithms for smooth and precise speed control. In addition to the main motor output, the i-Drive features 3 auxiliary outputs with programmable operating modes and timers. These outputs can be used to drive solenoid brakes, brush and vacuum relays, warning alarms or similar devices.

The electronics of the i-Drive are sealed against water ingress to IPx5, and when the optional connector sealing system is fitted, the cable connections are protected to IPx4. Low impedance inputs and current limited output drivers provide full protection against electrical faults and wiring errors. These features allow the i-Drive to function safely and reliably in the harshest of environments.

The powerful on-board diagnostics log records the details of system problems for all electrical items connected to the i-Drive, allowing difficult intermittent wiring problems to be solved rapidly. A run timer is also included, so that the total number of hours that the machine has been driven is recorded. Programming is achieved by PGDT hand-held devices or PC based programming software.

Safe and reliable functionality in the harshest of environments

TRUCHARGE DISPLAY



PRODUCT CODES

i24-45	24V, 45A
i36-45	36V, 45A
i24-70	24V, 70A
i36-70	36V, 70A
i24-140	24V, 140A
i36-140	36V, 140A
i24-180	24V, 180A
i36-180	36V, 180A

ANCILLARY ITEMS

i Cover: i45/i70	Water resistant sealing system
i Cover: i140/i180	Water resistant sealing system
i Molex™	Control connector kit
TruCharge Display	BDI & diagnostic gauge, 38x24mm mounting ap

PROGRAMMING

SP1A	Dealer/service level hand-held programming device
Ind PCPa	CD-ROM and cable for Dealer/service level PC pro
Ind PCPb	CD-ROM and cable for OEM engineering PC progr

*Microsoft Windows 98 / 2000 / XP

SPECIFICATIONS

Supply Voltage:	24Vdc	36Vdc
Operating Voltage:	16-30Vdc	16-45Vdc
Peak Voltage:	36Vdc	49Vdc
Reverse Battery Voltage:	40Vdc	60Vdc

Output Current:	45A / 70A / 140A / 180A
PWM Frequency:	20kHz ± 1%
Aux 1 Output:	Programmable mode, 1.25A
Aux 2 Output:	Programmable mode, i45/i70: 0.3A i140/i180: 1A
Aux 3 Output:	Programmable mode, i45/i70: 0.3A i140/i180: 1A
Status Output:	Programmable 12V, 50mA sink or source
Inhibit Input:	Programmable mode

Power Connections: i45/i70	6.35mm (0.250) Faston Spade
Power Connections: i140/i180	M6 screw terminals
Aux 1 Output Connections:	2-Way Molex
Control Connector:	14-Way Molex

Moisture Resistance:	Electronics to IPx5
	Connections to IPx4 with terminal cover fitted

Operating Temperature:	-25°C to +50°C
Storage Temperature:	-40°C to +65°C

Safety:	Multiple hardware & software strategy
	Designed to EN60335/2/67

EMC on sample machine	
Susceptibility:	Tested at 30V/m
Emissions:	To EN55022 Class B
ESD:	IEC801 part 2

For further details, refer to i-Drive Technical Manual SK76977

DIMENSIONS

	i45/i70		i140/i180	
Length	132mm	5.20	Length	173.0mm 6.80
Width	74.0mm	2.90	Width	122mm 4.80
Height	40mm	1.60	Height	48mm 1.90
Trucharge Display				
Length	53mm	2.10		
Width	31mm	1.20		